

Design House for Digital Signal Processing

Relcom PCDSP6, PCDSP6TEL DSP Board Driver

Product description

Relcom

©2009 Relcom Ltd.

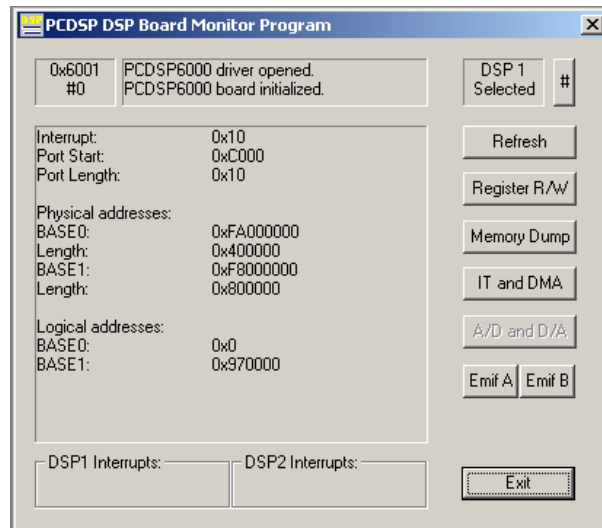
1. Overview of the PCDSP driver

The main tasks of the PCDSP drives are to connect the PCDSP hardware and the user application programs. The main part of the driver are:

Section	Features
PCDSP6xxx.sys	Kernel-Mode driver
PCDSP6000.dll	Driver API DLL
PCDSP6000.h	Driver API header file
PCDSP6000.lib	Driver API library file

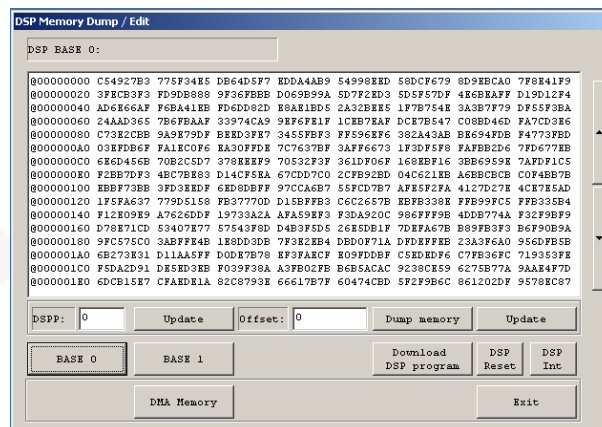
First, the end user program should be implemented in C/C++ language. The it should be compiled with PCDSP6000.h header and PCDSP6000.lib files. Finally the application can be executed with the PCDSP6000.dll.

The mail window of the application monitor program can be seen in the next Figure



1.1. Download DSP code

In order to download the custom program to the DSP, click on the "Memory Dump" button. In the file selection dialog please select the compiled object code file (*.out). The process illustrated in the next figure.



2. Contact

If you have any question related to our products please do not hesitate to contact us



Relcom, Ltd.

Address: H-1112, Budapest, Táska u. 17., Hungary

Phone: +36 30 201 9919

Fax: +36 1 246 1240

Mail: info@relcom.hu

Web: <http://www.relcom.hu>